



## SMART Implementation Plan Charrettes

Transit supportive land use plays a critical role in the success of major rapid transit investments. The Miami-Dade Transportation Planning Organization (TPO) is now examining this interrelationship to complement the SMART Plan, which is intended to help achieve community goals through integrating transportation land use planning and development of strategies.

Two (2) series of charrettes will be conducted for the South Dade Transitway Corridor, which runs from the Metrorail Dadeland South Station to Florida City (SW 344 Street). The first Charrette series will be conducted in December, which will be interactive planning sessions where the community will collaborate on creating a land use vision for the corridor.

### SMART Implementation Plan Charrettes South Dade Transitway Corridor

**Saturday**

**December 2, 2017**

**9:00 AM – 1:00 PM**

Town of Cutler Bay Town Hall  
10720 Caribbean Boulevard, 6<sup>th</sup> Floor  
Cutler Bay, FL 33189

**Wednesday**

**December 6, 2017**

**6:00 PM – 8:00 PM**

Village of Pinecrest  
Evelyn Greer Park Meeting Room  
8200 SW 124<sup>th</sup> Street  
Pinecrest, FL 33156

**Thursday**

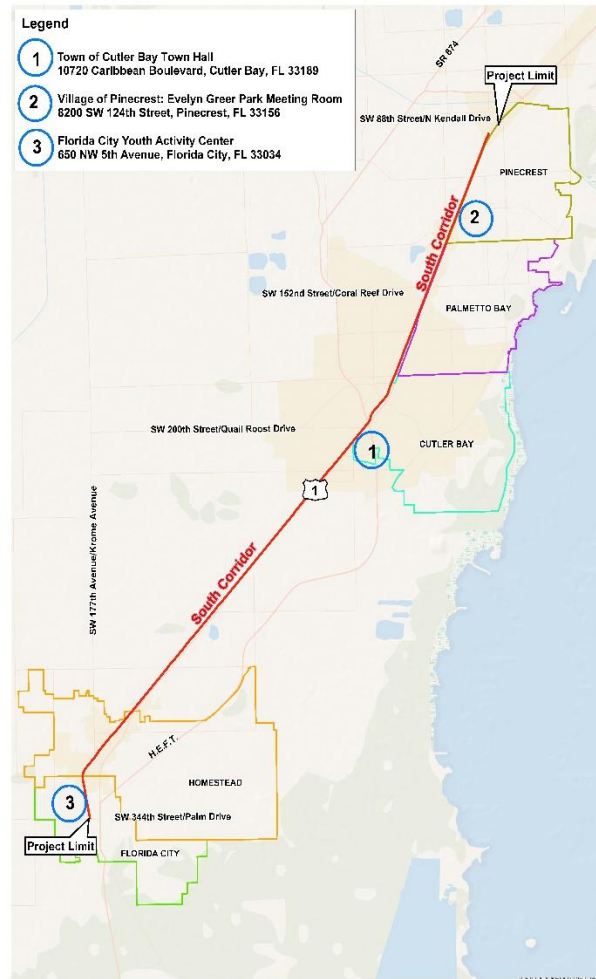
**December 14, 2017**

**6:00 PM – 8:00 PM**

Florida City  
Youth Activity Center  
650 NW 5<sup>th</sup> Avenue  
Florida City, FL 33034

For more information please contact:

Alex David, Consultant Team Co-Manager, at 786-485-5192 or  
[ADavid@CGASolutions.com](mailto:ADavid@CGASolutions.com)



[www.MiamiSMARTPlan.com](http://www.MiamiSMARTPlan.com)



#MiamiSMARTPlan

Public participation is solicited without regard to race, color, national origin, age, sex, religion, disability, or family status. Persons who require special accommodations under the Americans with Disabilities Act (ADA) or persons who require translation services, should contact Lorraine Reigosa, Consultant Public Information Officer for the South Corridor at 305-705-6342 at least seven days prior to the public meeting.